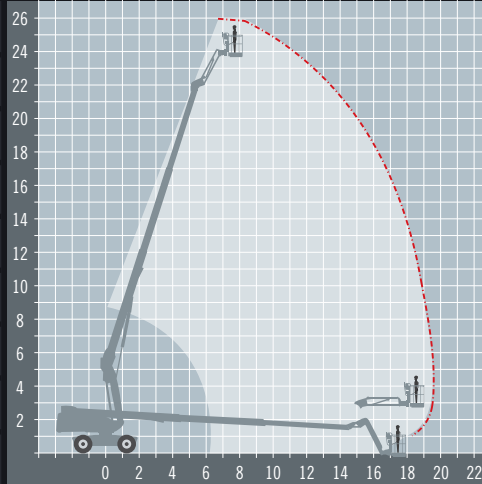


# MANITOU 260TJ+

ALTERNATIVES: JLG 860SJ

## All terrain telescopic boom

REACH HEIGHT	25.91 m
PLATFORM HEIGHT	23.91 m
HORIZONTAL REACH	19.7 m
STOWED HEIGHT*	2.75 m
LENGTH	10.8 m
WIDTH	2.43 m
PLATFORM SIZE	2.3 x 0.9 m
WEIGHT	16,300 kg
LIFT CAPACITY	400 kg



\*Length and width shown are when stowed.

- DIESEL POWERED**  
Perfect for external applications
- OUTDOOR RATED**  
Wind rated for outdoor use
- ROUGH TERRAIN**  
4 wheel drive for uneven ground
- EXTRA LIFT CAPACITY**  
Carry more personnel/equipment
- IPAF 3b**  
Requires IPAF category 3b

The Manitou 260TJ telescopic boom has a platform with large dimensions that can hold up to 3 operators or 400 kg. The operator is afforded a large working area due to its rotating pendular arm (+/-70°), and continuous turret rotation capacity of 360° providing flexibility of use.

## A range of extra's for 'Hire or Purchase' designed to give you the GTAdvantage™

- STOP NUISANCE BORROWING WITH GTA SECURE™**
- PROTECT SENSITIVE GROUND WITH 'GROUND GUARDS'**
- DOUBLE POINT HARNESSES TO KEEP YOU SAFE AT HEIGHT**
- PROTECT FINISHED SURFACES WITH WHEEL COVERS'**
- REFUEL ON-SITE THE EASY WAY WITH A FUEL BOX!**
- OPERATOR TRAINING FOR THIS ACCESS PLATFORM**

Find out more about the 'GTAdvantage' extras at [gtaccess.co.uk](http://gtaccess.co.uk)



THE POWER IN ACCESS™